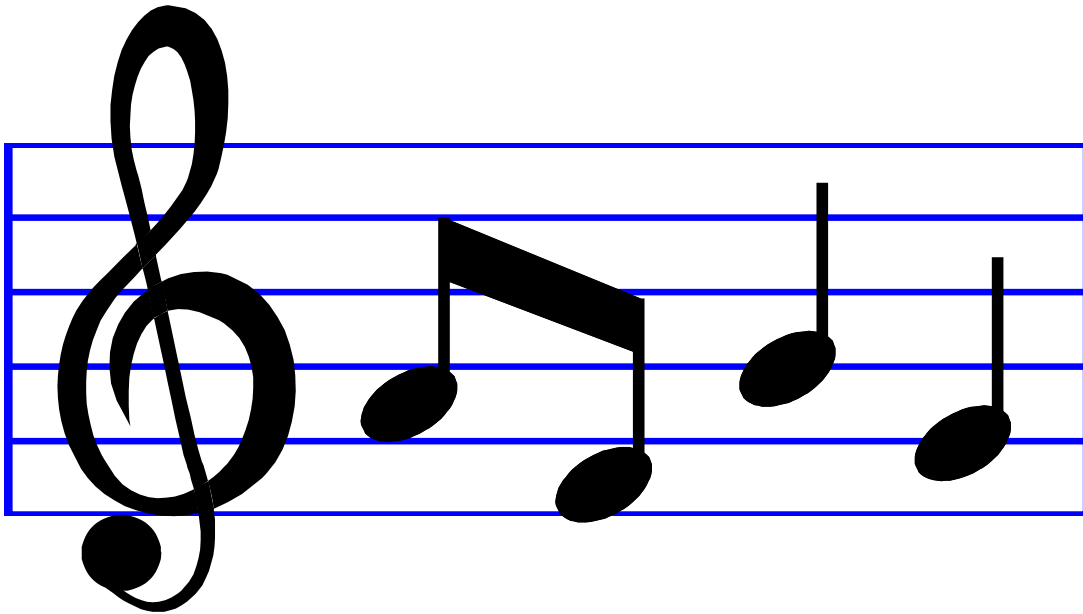


**WESTER MIDDLE SCHOOL
BAND HANDBOOK
2017-2018**



Nathan Wood, Director of Bands
NathanWood@misdmail.org

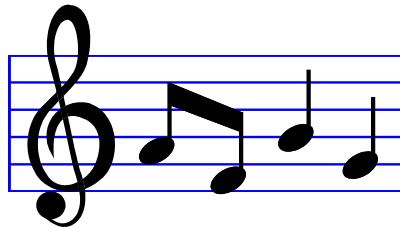
Christin Alkhazshvilly, Associate Director
CAkhazshvilly@misdmail.org

Band Website
www.brookswesterband.com

WESTER MIDDLE SCHOOL
Jennifer Powers, Principal
1520 N. Walnut Creek Drive; Mansfield, TX 76063
School: (682) 314-1800 Band Hall: (682) 314-1815 Fax: (817) 453-7213

CONTENTS

Philosophy.....	3
Course Objectives.....	3
Band Expectations.....	3-4
Rehearsal Etiquette	4-5
Instruments and Equipment.....	5
Lockers.....	5
Band Notebook.....	5
Grading Procedures.....	5-6
Sectionals.....	6
Extra Credit.....	6
Attendance.....	7
Fundraisers.....	7
Dress Policy.....	7
Band Placement and Requirements.....	8-9
Moving Between Bands.....	9
Spring Trips.....	9
Band Council.....	9-10
Communication.....	10
Morning Procedures.....	11
The Band Store.....	11
Instrument Repairs.....	11
Music Store.....	11
Private Lessons.....	11-12
Upgrade instruments.....	12
Pages to sign and return.....	13-18



PHILOSOPHY

The band program at Wester Middle School, with the support of our principal, Ms. Jennifer Powers, operates under the following philosophy:

Band is a musical organization that provides students with the opportunity to become proficient on band instruments, familiar with music literature, and acquire the ability to understand, create, and express themselves through the music they perform.

COURSE OBJECTIVES

Aesthetic experiences are a vital part of student growth. Band, as a musical organization, provides one medium of aesthetic expression for students. Our departmental goal is that each student be able to express the aesthetic values of music, through performance skills and theory comprehension.

The student will be provided opportunities to:

1. develop self-discipline as well as group discipline through preparation and practice of individual parts
2. develop leadership skills, responsibility, diligence, and an ability to cooperate with others as a team member
3. develop strength, stamina, endurance and coordination
4. develop an ability to make musical value judgments through critical listening. The student shall be provided opportunities to recognize quality of sound, pitch, style, tempo, rhythm, blend, balance, phrasing, dynamics, and articulation.
5. further develop skills in using and understanding note values, rests, key signatures, scales, musical terms, signs, and symbols
6. develop the ability to recognize and tune intervals, unisons, harmony, and train the ear
7. further develop proper instrumental technique, care for instrument, correct posture and playing position, embouchure, good tone, correct breathing, technical proficiency, and rhythmic skill
8. further develop instrumental technique in finger/tongue coordination, intonation, musical phrasing, dynamic control, rhythmic skills, and articulation
9. further develop music reading skills and hand-eye coordination. The student shall be provided opportunities to interpret through a musical instrument musical symbols and terms.
10. develop musical sensitivity through performance of music and listening to music. The student shall be provided opportunities to internalize generally accepted, authentic performance styles and techniques in music played and heard
11. evaluate the quality of musical performance. The student shall be provided opportunities to evaluate progress toward self-established musical goals, evaluate solo and group rehearsals and performances, and recognize quality of sound, pitch, style, tempo, rhythm, blend, balance, phrasing, dynamics, and articulation.
12. develop creative self-expression in every performance experience and explore careers

WMS BAND EXPECTATIONS

1. All students are expected to be courteous and respectful to their classmates and teachers.
2. The primary use of the band hall is for rehearsals. Never do anything that would interrupt a rehearsal. If no rehearsal is taking place, please consider the band room a very quiet place.
3. Arrive prepared with all necessary materials every time you come to band.
4. You must be in your chair within one minute of the tardy bell starts ringing.
5. Practice rooms are for practicing only.

6. *Only band students* are allowed in the band hall and practice rooms. This is for your protection!!
7. NEVER leave your instrument unattended. Students may drop off their instruments before their first class and pick them up immediately after school.
8. All cases will be stored in their assigned locker. Students are responsible for keeping their individual lockers clean and neat. School books, papers, and lunches are not allowed in the rehearsal space.
9. No one shall play, hold, or otherwise operate or handle another person's instrument.
10. For your health and well-being, food, drinks, and gum are not allowed in the band hall.
11. All band students are encouraged to use the band hall and practice room facilities. Everyone will assist with keeping these rooms neat and clean. Cleaning is everyone's responsibility and should never be thought of as punishment.
12. All students will keep a band notebook. Music, band book, and all handouts will be kept in the band notebook. Other required materials include a pencil and any accessory items needed for maintaining their instruments.

Consequences for violation of the above policies can include reminders, loss of privileges, detentions, teacher/parent conferences, office referrals, and removal from the band program.

REHEARSAL ETIQUETTE

The quality of work that a performing ensemble achieves in its rehearsal is the single most important factor in the overall success of the group. Efficient rehearsals produce SUPERIOR bands. There are certain factors that will contribute to good rehearsals on a daily basis.

BE IN THE RIGHT PLACE, AT THE RIGHT TIME, WITH THE RIGHT EQUIPMENT, AND THE RIGHT ATTITUDE

- 1) **A POSITIVE ATTITUDE** will go a long way in helping the band reach its potential. Always enter the band hall with a purpose of accomplishing a musical goal. Leave other problems outside of the band hall and focus on the rehearsal at hand.
- 2) **THE RIGHT EQUIPMENT** will make the rehearsal go smoother. Have a **pencil** and/or **highlighter** on your music stand at all times. Marking music will help you remember important information about the piece being prepared. This will be beneficial to you in performance and in home practice. Be well prepared by having all equipment in the proper working condition. This includes reeds, mouthpieces, tuning slides, etc. If you have a mechanical problem with your instrument, please seek help from the assisting director in your band before class begins.
- 3) **THE RIGHT TIME.** Always give yourself enough time to get set up and warmed up. When in a rush, your focus and concentration are the first things that suffer. Students should be in their seats at ready position when the tardy bell rings. All noise and movement should come to a halt after the tardy bell.
- 4) **GOOD POSTURE and HAND POSITION:** Every band member should know the importance of good habits in posture and hand position. Please be responsible for maintaining a high level of professionalism in your approach to playing your instrument.
- 5) **SELF DISCIPLINE:** Rehearsals run smoother when the classroom atmosphere is at a superior focus level. Students can make a big difference in the direction of a rehearsal by following these etiquette guidelines:
 - a. No talking during rehearsal
 - b. Eyes on the conductor throughout the rehearsal
 - c. Raise your hand if you have a question
 - d. Be at ready position unless told otherwise
 - e. Be patient with others and listen to progress taking place
 - f. Always answer a question with a "yes or no sir," "yes or no ma'am."

g. Concentrate: Be ready to move quickly and quietly between tasks.

6) Always **READ THE ANNOUNCEMENTS** and **CHECK THE BOARD** for information and the daily activities.

7) **RESPECT:** When a large group of people work closely together on a daily basis, it is important to bolster respect for each other and the director in and out of rehearsal. Please be sensitive to the feelings of others in the group. Be polite and treat others as you would want to be treated.

INSTRUMENTS & EQUIPMENT

Students are expected to furnish their own instruments. The following are issued through the school: oboe, bassoon, tenor & baritone saxophone, bass clarinet, horn, baritone and tuba. These instruments are available through the school for a yearly maintenance fee of \$60. Students are expected to furnish all supplies for their instrument and for class as well as a folding wire music stand for home practice and football games.

Students are expected to use proper handling and care of school owned instruments. **If a student misuses or abuses a school owned instrument, he/she will be responsible for the cost of bringing the instrument back to its issued condition.** As a rule of thumb, students are responsible for repairs of school instruments, except normal wear and tear service. Wester Middle School reserves the right to recall any loaned instrument in cases of misuse, lack of practice, and evidence of conduct unbecoming a member of the organization.

Percussionists wishing to check out a piece of district owned equipment may do so through one of the directors. Equipment must be returned the following day. Percussionists should own a practice pad and all sticks/mallets. **Percussionists should never leave their own equipment in the percussion room or their hall locker. Each percussionist will be assigned a locker in the band hall to keep their stick bag.**

Names should be clearly marked on all instrument cases!

LOCKERS

All students will be assigned a locker in the band hall to store their instruments. No student should keep his/her instrument in a school locker for any reason. Instruments should **never** be left in the band hall on weekends or during vacation periods. Students are expected to take their supplies home daily. **(Keep in mind that our band hall is often occupied in the evenings for concerts at Willie Pigg Auditorium. A lot of people are in our band hall for these events.)**

Students are expected to provide their own **combination** lock (no keys) for the safe-keeping of their instrument. The combination will be kept on file with the band directors.

BAND NOTEBOOK

ALL STUDENTS will keep a black, three-ring binder, sheet music, and a rehearsal book for which they are responsible.

ALL STUDENTS must bring to practice and rehearsal the following equipment each day for the entire school year:

1. Instrument and all its necessary equipment (4 performance-quality reeds, drumsticks, oil)
2. Notebook/Music book
3. All music
4. Pencil and/or highlighter (any color)
5. Pencil bag to hold writing utensils, metronome, tuner, etc.

GRADING PROCEDURES

40% **MAJOR GRADES** – This includes playing tests, chair tests and performances. Playing tests will be given during sectionals and class. All tests may be retaken for a higher grade if a grade of 70 or below is earned. Retakes must be rescheduled with the director on a one-on-one basis and must be completed within 7 calendar days of the first test or the last day of the 6-week grading period, whichever comes first. Each retest will become the new grade.

Concerts are a curricular event and considered to be part of the classroom. Therefore, attendance at all performances is mandatory. Missing one person from a performance will greatly impact the entire group. This

includes group and individual performances. An unexcused absence from a concert will greatly jeopardize a students' grade and standing in the band program.

60% **DAILY WORK** –Students are expected to be on time and prepared with proper supplies for each rehearsal. Grades include individual preparation of materials and presentation in class. Points will be deducted from this category if a student is missing their instrument/supplies, demonstrates poor ensemble rehearsal skills, and/or does not participate appropriately in class.

This category also includes showing proficiency of scales and other technical exercises. These are usually short exercises compared to playing test material. When a skill is “passed-off”, a grade of 100 is recorded. A student may take multiple attempts to reach proficiency level on these assignments.

SECTIONALS

Sectional rehearsals are vital to the success of our band program and are considered part of the students' grade. These rehearsals allow the directors to give student individual and instrument specific instruction that is not possible during the regular band class. For these rehearsals to be effective, it is necessary for each student to be present at every scheduled rehearsal. Whenever one student is absent from a rehearsal or performance it weakens the entire group!

We will work to avoid conflicts with other school functions. If you have a routine doctors/dentist appointment, please try to schedule it around sectionals and regular band classes. If other unavoidable conflicts are brought to our attention **in advance**, they can usually be rescheduled. Sectionals will run from September-November to prepare for All District and All Region Band auditions. Sectionals will resume in January to prepare for Solo & Ensemble Contest and UIL Contest in during the second semester.

Band Sectionals will be scheduled before school from 7:45 a.m. to 8:35 a.m. and after school from 4:15 p.m. to 5:00 p.m. depending on the instrument. **Wester Middle School Band and Athletics work together to insure that all students may attend both sectionals and athletic practices.** If there are conflicts, please be aware that the band director and coaches will work together to solve the problem. Please make arrangements for your child to be dropped off or picked up on time. If there is a problem with transportation please notify the directors in advance. If the directors are aware of transportation problems, or other problems before hand, we will work together to resolve the conflict. Students absent from a sectional rehearsal without being previously excused will be penalized as outlined in the Grades and Test section of this handbook. Schedules will be available the second week of school and in December.

EXTRA CREDIT

Extra credit will be given to those who are able to attend performances outside of school. These include: Dallas Symphony Orchestra, Dallas Wind Symphony, Civic Theater, other professional performances in the Dallas/Fort Worth area well as performances and contests involving MISD music programs. Simply turn in the performance program to the practice record box with your name on it.

ATTENDANCE

Any activity, which is included in the course objectives, is considered curricular. Any extra rehearsals and all performances are part of the course requirements and are therefore graded activities.

In scheduling events for the year, accommodating everyone is difficult. Please understand we can not schedule around each individual's activities. The **Calendar of Events** should assist you in making plans. Some of our dates are set by our state organizations (contests) and others by the school district. Upcoming events will be listed on the practice record for each grading period.

When scheduling performances and after school rehearsal, the band directors take special care to avoid conflicts with other **school** functions. Please be aware that missing performances or scheduled rehearsals for non-school functions will not be considered as an excused absence unless approved by the director.

*Special note – Please do not have braces tightened or any major dental work done the week of band performances or major auditions such as district/region tryouts, concerts, etc. Your cooperation when scheduling dentist and orthodontic procedures is greatly appreciated. (Your students will greatly appreciate it!)

PLEASE MARK YOUR CALENDAR NOW AND AS YOU RECEIVE ADDITIONAL DATES.

FUNDRAISERS

MISD is very generous in supporting the band programs in our district. However, it is simply not possible for the district to fund all of the enrichment activities that we feel are a vital part of your child's musical education.

For this reason, the Wildcat Band will participate in fundraising activities. Some activities supported by our fundraiser are registration fees and transportation costs for all non-UIL competitions, the spring trip, instrument and band clinics, purchase of extra equipment for the band program and many other activities too numerous to list.

On average, the cost of each child participating in all band activities is approximately \$150 per year. In order for all our students to get the full band experience without being a financial burden to you the parent, we ask that as many parents and students as possible participate in the band fundraisers. In addition, donations are always accepted. We understand that not all parents wish for their children to participate in these fundraisers and the WMS band respects that decision. Please keep in mind, however, the cost of each child's participation in our program and support the band in any way you feel possible.

PERFORMANCE DRESS POLICY

INFORMAL UNIFORM

For pep rallies, football games, and other informal performances deemed by the directors, the students will wear:
Official Band Shirt (tucked in)
Full Length Blue Jeans
Tennis Shoes (no sandals)

FORMAL UNIFORM

For concerts, contests and other formal engagements, the students will wear the following formal uniform:

BOYS

Tuxedo shirt with black bowtie
White undershirt
Black dress slacks (no jeans or "baggies")
Black dress shoes and black socks

GIRLS

Tuxedo shirt with black bowtie
White undershirt
Black skirt (below knee) or dress slacks
Black hose and black closed toe shoe

Cummerbunds will be provided by the band. Replacement for lost or damaged uniform parts will be \$10.

Any deviation from this dress code without the prior knowledge of the director will result in the student not being allowed to perform and will effect the students' grade accordingly.

ALL STUDENTS WILL BE EXPECTED TO DRESS APPROPRIATELY FOR ALL CONCERT PERFORMANCES.

BAND PLACEMENT AND REQUIREMENTS

A live audition and an evaluation of each student's performance determines band placement. All placements in the Wester band are determined based on tone, facility on the instrument, scales, and prepared piece(s). Auditions will take place in late April/early May for the following school year. The audition consists of two parts:

1. Bb, Eb, Ab, Db, G, C, F and Chromatic Scales. Each major scale has a maximum point value of 10 points per octave completed while the Chromatic is worth a maximum of 50 points.
2. Performance of a prepared piece selected by directors. The piece will be chosen and distributed to students by mid-March of each year.

Students that enroll at Wester during the school year will be heard upon enrollment. Students will be expected to perform scales and a piece that can show their current playing skills. Recommendations from director at previous school may be used to assist in class placement.

HONORS BAND

The Honors Band is Wester Middle School's premier performing ensemble. They officially represent the school and perform often throughout the year. Students are also expected to practice the required amount to maintain the integrity and level of this organization. As this organization represents Wester Middle School in many activities that are extra curricular in nature, it is necessary that each student maintain a 70 or higher in all classes and keep behavior at an exceptional level.

If a student is unable to fulfill these performances, academic and conduct obligations, the band director along with the counselors and principal will evaluate the situation and reassignment to a band with less demanding curricular and extra-curricular obligations may result.

ACTIVITIES INCLUDE

- Extra outside of school rehearsals as deemed necessary before a performance
- Pep Band Performances
- All-District and All-Region band auditions
- Formal Concerts (Fall, Winter, Mid-Semester, Pre-UIL and Spring)
- Solo and Ensemble contest
- Clinics and rehearsals if scheduled outside of the school day
- Pre-UIL and UIL Concert & Sightreading Competition
- Invitational contests
- Recruiting Concerts
- Other performances and rehearsals deemed appropriate by the directors.

SYMPHONIC AND CONCERT BAND

Students are also expected to practice the required amount to maintain the integrity and level of this organization. As this organization represents Wester Middle School in many activities that are extra curricular in nature, it is necessary that each student maintain a 70 or higher in all classes and keep behavior at an exceptional level.

If a student is unable to fulfill these performances, academic and conduct obligations, the band director along with the counselors and principal will evaluate the situation and reassignment to a band with less demanding curricular and extra-curricular obligations may result.

ACTIVITIES INCLUDE

- Extra outside of school rehearsals as deemed necessary before a performance
- Pep Band Performances
- All-District Band auditions (With director recommendation)
- All-Region Band auditions (With director recommendation)
- Formal Concerts (Fall, Winter, Mid-Semester, Pre-UIL and Spring)
- Solo and Ensemble contest
- Clinics and rehearsals if scheduled outside of the school day
- Pre-UIL and UIL Concert & Sightreading Competition
- Invitational contests
- Other performances and rehearsals deemed appropriate by the directors.

PEP BAND

Pep Band is a group that plays at pep rallies and football games. While the music is fun because it's recognizable, it is also quite challenging. Students in Honors, Symphonic, and Concert Bands are part of the Pep Band.

PARTICIPATION IN THESE ACTIVITIES SHOULD NOT BE CONSIDERED OPTIONAL. THEY ARE REQUIREMENTS FOR MEMBERSHIP IN THE WESTER MIDDLE SCHOOL BAND.

MOVING BETWEEN BANDS

Students might be considered for movement between bands at the end of the first semester if there is an opening in the higher band.

Requirements to be considered for moving up:

- Pass all classes each 6-weeks grading period for the 1st semester (eligibility).
- Have a grade of 90 or higher each 6-weeks in the current band class
- Audition for District and Region bands (Symphonic to Honors Band only)
- Successfully complete final exam requirements for the higher band

Requirements to move down:

- Fail any class at the end of the 6-weeks grading period during the 1st semester (ineligibility)
- Have a grade below 70 any 6-weeks in the current band class
- Fail to meet requirements for the current band assignment
- Fail to show reasonable progress in current band class

All recommendations for moving between bands are subject to counselor approval.

SPRING TRIP

Toward the end of each school year, all of the WMS bands are involved in a spring trip and competition festival. These trips are extra curricular and not part of the student's grade. However, because these trips involve a band competition performance, participation is highly encouraged. In order for our groups to perform their best, we need all our members. Students who choose not to participate or have conflicts must inform their director at least **six weeks** prior to the scheduled event so that the director may make arrangements for their part to be covered and can cancel their trip reservation. Students who do not notify the director by the six week deadline will need to reimburse the band for the cost of their spring trip (usually around \$80-\$100).

Spring trips are a reward for the hard work of our band members. All Wester band students will be eligible to go on this trip with the following exceptions:

- 1) Students who fail any classes the fifth six weeks.
- 2) Students who have an unexcused absence from a scheduled band concert.

Students who do not fulfill these obligations will not be eligible to attend the spring trip.

WESTER BAND COUNCIL INFORMATION

Elections will be held for the following positions:

Honors Band

Honors Band Representative
7th grade Representative
8th grade Representative

Symphonic Band

Symphonic Band Representative
7th grade Representative
8th grade Representative

Concert Band

Class Representatives from all classes
7th grade Representative
8th grade Representative

Additional offices may be appointed as needed by the director. This will involve an application and interview process. These positions will include music library and logistical responsibilities throughout the year.

ELECTION REQUIREMENTS:

- must be a dependable leader and role model
- must be dedicated to the band program and attend all council meetings
- must abide by all band rules and requirements as stated in the band handbook
- must maintain passing grades in all classes

OFFICER DUTIES

Honors Band Representatives – An Honors Band member will act as the main representative for the entire band program. He/She acts as a liaison between the band members and the directors, helps organize and conduct council meetings along with band directors, and works with other council members on issues concerning the band.

Symphonic and Concert Band Representatives – One member from each Symphonic and Concert Band will act as the main communicator to their respective band as to the issues discussed in council meetings. He/She acts as a liaison between the band members of their band and the directors, will work together with the band directors other council members on issues concerning the band, and will attend all council meetings.

Secretary – He/She will record “minutes” from each meeting and make copies for each vice-president to share with their respective band. He/She works together with other council members on issues concerning the band, attends all council meetings and takes attendance of officers present. This position will be appointed through an application/interview process.

7th and 8th grade Representatives – They are members from each band that work together with other council members on issues concerning the band and attend all council meetings. We will have 2 representatives from each band.

Librarian and Logistics – These are representatives from each band that are responsible for organizing and copying music and equipment needs for their respective band. He/She is allowed to take care of music issues for band members during rehearsals and outside of school hours, has access to the band hall copy machine, and is responsible for keeping the music library organized. He/She works with other council members on issues concerning the band and attends all council meetings. This position will be appointed through an application/interview process.

COMMUNICATION

Communication is essential for the success of the band program. Since it can be difficult to reach us by phone during the day, an answering machine is available to leave a message. However, we have found that email is the fastest way to receive a response. It is our goal to respond to every message within 24 hours.

Nathan Wood
NathanWood@misdmail.org

Christin Alkhazshvilly
CAlkhazshvilly@misdmail.org

Wester Band Website
www.brookswesterband.com

The band website is updated as new information and materials become available. Information regarding various band events will be posted in addition to items that handed out in class (such as objective sheets).

The directors will also send out email-updates throughout the year as deadlines and events approach. Please make sure that the directors have your current email address. In past years, many parents have found these updates to be very valuable. When information is sent home with your student, an email update with this information will follow.

The phone and fax numbers to WMS are as follows:
Main Number: 682-314-1800
Band Hall: 682-314-1815 (Wood) or 682-314-1816 (Alkhazshvilly)
Fax Number: 817-453-7213

MORNING PROCEDURES

In an effort to assist the administration here at Wester, the following procedures are expected if you drive your child to school in the morning:

- Students arriving for a sectional or private lesson can enter through the courtyard gate. This gate will close at 8AM. If you are running late for your sectional or lesson, please enter through the back entrance
- Students not in a sectional or lesson will enter through the front of the school and go to the gym or cafeteria. You will be able to take your instrument to the band hall shortly before the 8:35. The instrument case is your pass. Students will enter through the wooden doors of the C-Hall entrance. Once you arrive, you will remain inside of the band hall until the 8:35 bell. Please be considerate of students practicing and learning as you enter the rehearsal room.
- Students that maintain a regular before-school practice regimen or take private lessons in the band hall practice rooms will receive a pass that will allow them band hall access before school. This pass must be shown upon request by a teacher on duty or campus administrator.

The band hall will open each day between 7:35- 7:40 AM on mornings with a scheduled sectional rehearsal.

SUPPLY PURCHASES

For your convenience, we sell many of the everyday band supplies that are needed by band students. To make the beginning of class more efficient, students should purchase these items before school or after school. The directors recommend that the reed players (clarinet, bass clarinet, and saxophone) purchase reeds by the box (\$30) instead of one at a time. Individual reeds will be sold in case of an emergency. When sending payment, please send as close to exact change as possible when paying cash. Checks may be made out to Wester Middle School Band.

INSTRUMENT REPAIRS

If an instrument is in need of repair, the student should first have the director look at it. Often, the directors can make minor repairs and adjustments.

CHOOSING A MUSIC STORE

Parents and students are welcome to purchase accessories, music, and new instruments at a music store of their choice. All of these items are available from several local stores and mail-order companies. The Wester Band primarily uses Music and Arts and Ellis County Music and knows that they provide quality instruments, accessories, and professional instrument repair service. In addition, Rivard Brothers, and Brook Mays Music, and Music Place Mansfield also provide quality products and services. For your convenience we have listed their phone numbers.

Music and Arts 817-466-8696	Rivard Brothers 817-459-2263	Ellis County Music 972-937-5300	Brook Mays 817-468-1500	Music Place Mansfield 817-225-6060
--------------------------------	---------------------------------	------------------------------------	----------------------------	---------------------------------------

PRIVATE LESSONS

It is the goal of the Wester Middle School Band department to provide the very best learning experiences for each student. One of these learning experiences is the opportunity for a student to study privately with a professional instrumentalist. This enrichment opportunity is available to all band students.

The private lesson program allows interested students to receive additional individual help in their musical training. This individual attention generally improves the performance level of the individual student and also has a positive effect on the band in which the student participates. One of the greatest contributing factors to the success of any band is the active involvement of the students in this program. Students gain the most from this opportunity when they start early and continue throughout the year. Below are the basic procedures of the program. More specific information can be obtained from a director.

PRIVATE LESSON POLICIES AND PROCEDURES

1. Students normally take one 22 minute lesson each week. Lessons are \$18 each.
2. Lessons may be scheduled before school, after school, or during band depending on the schedules of the students and the teachers.
3. The billing periods for lessons are monthly. The teacher will issue the statements.
4. If a student misses a lesson, they will be credited for that lesson only if they contact the lesson teacher in advance.
5. Parents should encourage their child to have a regular practice time each day and to prepare their materials for their private lesson in addition to their assignments for band class.
6. Students of all levels can benefit from private instruction.
7. Even though the majority of students choose to take private lessons, they are not required and are not a part of the student's grade in band.
8. There are a very limited number of scholarships available for private lessons. Please contact a director for information
9. Private instructors may require supplemental method books to be used during lessons.

The instructors are specialists on their instruments. Many have advanced degrees in music and perform professionally. These teachers are hand picked by the directors in the district to ensure that all of our students will receive quality instruction.

If you are currently studying with a teacher, please put that teacher's name on the student information sheet at the back of this handbook. If you need a teacher, please fill out the Private Lesson Registration Form that can be found in the back of this handbook.

UPGRADE INSTRUMENTS

Many students decide that band is more than just a hobby and would like to advance their talent. One of the most significant changes you can make is the decision to purchase an upgraded instrument.

Directors make many decisions when recommending step-up instrument models. We try to find the most accessible instrument to all students. When all students in the section have the same instrument model and mouthpiece, it is much easier to tune and match tone quality. We also try to find the final instrument purchase that will carry the student throughout their band experience while maintaining resale value. We highly recommend keeping the beginner model instrument for high school marching band. *Never* take the professional model instrument into the elements!

Prices vary everywhere you shop. It is a very good idea to purchase a new instrument from a reputable dealer that offers purchase options, maintenance plans and guarantees. Use caution when shopping through newspaper ads, pawnshops, and on the internet. In addition, some of the “Super-Stores” have begun to carry instruments as well. These are typically beginner level instruments and most repair shops in the area will not repair them. Make sure the individuals selling the instrument will be willing to let a music dealer or band director inspect it before final purchase. We have seen many clarinets from pawnshops missing entire key sections!

The following recommendations are good choices for upgrades. Please feel free to contact the directors or

Flute	Yamaha YFL 674H and Yamaha YFL 481H
Clarinet	Buffet R13 and Buffet Festival
Alto Sax	Selmer Super Action 80 and Yamaha 62II
Trumpet	Yamaha Xeno Series and Bach Stradivarius Model 37
Trombone	Bach 42BO, Getzen 1047F, Eastman by Shires, and Shires Pro Select

The larger music stores like Music and Arts will hold 1-2 professional instrument upgrade events at their store each year. The directors will pass along information regarding these events as it is received from the stores. Please let us know if we can be of any assistance.

**Return the following pages by 8/31/17.
Keep the handbook at home for your records.**

**Yes, there are a few pages that need information and signatures.
Thanks for your patience.**

*****With this form, you have 2 options:**

1. Fill this page out and return.
2. Log into www.charmsoffice.com
Enter "WesterMSBand" under Parent/Student Login
Enter your student's ID number for Student Password
Update/Enter information on the screen.
When completed, write "Updated on Charms" on this page and return.

Student's Name _____ **Band Class** _____

Address _____

City, State, Zip _____

Home Phone _____

Instrument _____ Locker Assignment _____ Combination _____

Private Teacher _____

Same address and phone information for _____ Mother _____ Father

Mother's Name _____

Address (if different) _____

City, State, Zip _____

Work Number _____ Cell Number _____

Email _____

Father's Name _____

Address (if different) _____

City, State, Zip _____

Work Number _____ Cell Number _____

Email _____

PARENT VOLUNTEER INFORMATION

Before volunteering, please complete the MISD Background Check. This can be found out:
<https://mansfield.quickapp.pro/apply/applicant/start?ref=eff2f70ca50d43279741a824007b83aeee92a7b885ad5c450166d3b556b14796>

Please circle the activities in which you would like to participate:

Chaperone	Concert Decorating
Fundraising	Dance Decorating
Uniform Help	Any other area of need _____

HANDBOOK ACKNOWLEDGMENT FORM

**PLEASE SIGN, DETACH, AND RETURN THIS PAGE BY
AUGUST 31, 2016**

Band to which you are assigned: (circle one)

Honors Band

Symphonic Band

Concert Band

Beginner Class

We have read and understand the Wester Middle School Band Handbook.

I, _____, along with my parents understand
(please print)
what is expected of me and intend to abide by this handbook for the success of myself
and the organization in which I am a participant. I also understand that failure to abide
by the guidelines in this handbook may result in being placed in a non-performing
instrumental class.

Student Signature

Parent Signature

Date

**Wester Middle School Band
Medical Information and Release Form
2017-2018 School Year**

Fill in this form completely and return to the band office. Notify the band office as soon as possible if any changes need to be made to this information.

Student's Name _____

Address _____

City _____ Zip _____ Home Phone () _____

Mother's Name _____

Work Phone () _____ Cell Phone () _____

Father's Name _____

Work Phone () _____ Cell Phone () _____

Alternate Emergency Contact Name _____

Phone () _____

Family Doctor _____

Phone () _____

Student's Insurance _____

Policy Number _____

List any allergies the student has (including drug allergies)

List any medications that are being taken

List any conditions that may restrict physical activity

I do hereby give Nathan Wood and Christin Alkhazshvily, or their designees, the authority to seek medical attention for the above named student in the event of an emergency or in any situation that requires medical attention.

Parent/Guardian Signature _____

Date _____

PARENT'S PERMISSION RELEASE AND INDEMNITY FOR FIELD TRIPS

I hereby certify that my son/daughter, _____, has my permission to participate in the field trips with the Wester Middle School Band during the 2017-2018 school year.

To the best of my knowledge he/she is physically fit to engage in such activity and is not suffering from any disease or injury. I agree and do hereby waive and release all claims against the Mansfield Independent School District and any teacher, employee or other person engaged in the activity in question and agree to hold them harmless from any and all liability relating to my son/daughter for any personal injury or illness that may be suffered or any loss of property that may occur.

I understand that reasonable measures will be taken to safeguard the health and safety of my son/daughter and that I will be notified in the case of an emergency. In the case of an accident or sickness, I authorize the calling of a doctor or the providing of other medical services.

It is understood that no child will be allowed to participate in any activity until this form is signed by his/her parent/guardian.

Signed at _____, Texas, this ____ day of _____, 2017.

Signature of Parent/Guardian _____

Phone Numbers _____

WESTER MIDDLE SCHOOL BAND UNIFORM ORDER FORM

Student Name _____

Band Class _____

Informal Band Uniform (Wester Band Shirt)

T-Shirt Size Needed (Adult Sizes):

_____S _____M _____L _____XL _____XXL

(Additional \$3 fee required)

This is the time to order additional shirts for parents and family members! A limited number of extra shirts will be ordered, so get yours now.

Formal Band Uniform (Tuxedo Shirt and Black Bowtie)

(If you already have one and it still fits, there is no need to order another.)

_____ Yes, I need a tuxedo shirt and bowtie.

_____ No, I already have a tuxedo shirt or I will purchase one on my own.

_____ I have a tuxedo shirt and need to purchase black bowtie.

Measurements will be taken during class time.

Band T-Shirt	\$15 or \$_____ (if ordering more than one)
Tuxedo Shirt/Bowtie	\$20 (if needed)
Bowtie Only	\$5
Total Attached	\$_____

*****If paying by check, please make checks payable to Wester Band.**

FORM DUE 8/31/2016

**Mansfield Music Enrichment Program
Supplemental Music Instruction
Student Registration/Parental Permission**

- I wish for my child to participate in the Mansfield Music Enrichment Program (MMEP).
- I have received a copy of the MMEP Guidelines for Participation and agree to abide by all its conditions and policies. (pages 11-12 of handbook)
- I understand that the cost of instruction is \$17.00 per lesson payable monthly in **advance**.

Student _____ (Print name)

Parent/Guardian Signature: _____

Address: _____

City: _____

Zip: _____

Home Phone: _____

Work Phone: _____

Instrument(s)/Vocal: _____

School: _____

Band/Choir Director: _____

Is there a need for financial aid? _____ Yes _____ No

Please return this registration form to your child's band director as soon as possible.

To be completed by the Private Instructor

Private Instructor _____

School _____

Lesson day and time assigned _____

Director's approval signature _____